

Determining trace oxygenates in hydrocarbon streams by multidimensional gas chromatography

#1503 – Trace Oxy Analyzer



Configuration:

Configured by method:

ASTM D7423
ASTM D7754
UOP 960

Analyzer Configuration:

Automatic gas sampling valve (for gaseous samples),
Automatic liquefied sampling valve (for liquefied samples),
Autosampler AS-2M for liquid samples,
Deans switching micro-volume Tee for wide-bore columns,
Capillary columns (set of 2).

Instrument Configuration:

C9000, S/SL Inlet, FID, Aux 1ch UEPC.

Carrier Gas:

He

Oven temperature:

Programming

Sample Type:

C2 (e.g. ethylene), C3 (e.g. propylene), C4, C5 hydrocarbons, Gasoline and similar liquid hydrocarbon samples with boiling point < 200°C

Analyzed Compounds:

Dimethyl ether, Diethyl ether, Acetaldehyde, MTBE, ETBE, DIPE, TAME, Propionic aldehyde, Propyl ether, Isobutyl aldehyde, Butyl aldehyde, Isovaleraldehyde, Valeraldehyde, Methanol, Acetone, MEK, Ethanol, Propanol + Isopropanol, Allyl alcohol, Butanol + Tert-butanol + s-Butanol, n-Butanol

Quantification range:

0.5 – 100 ppm mass.

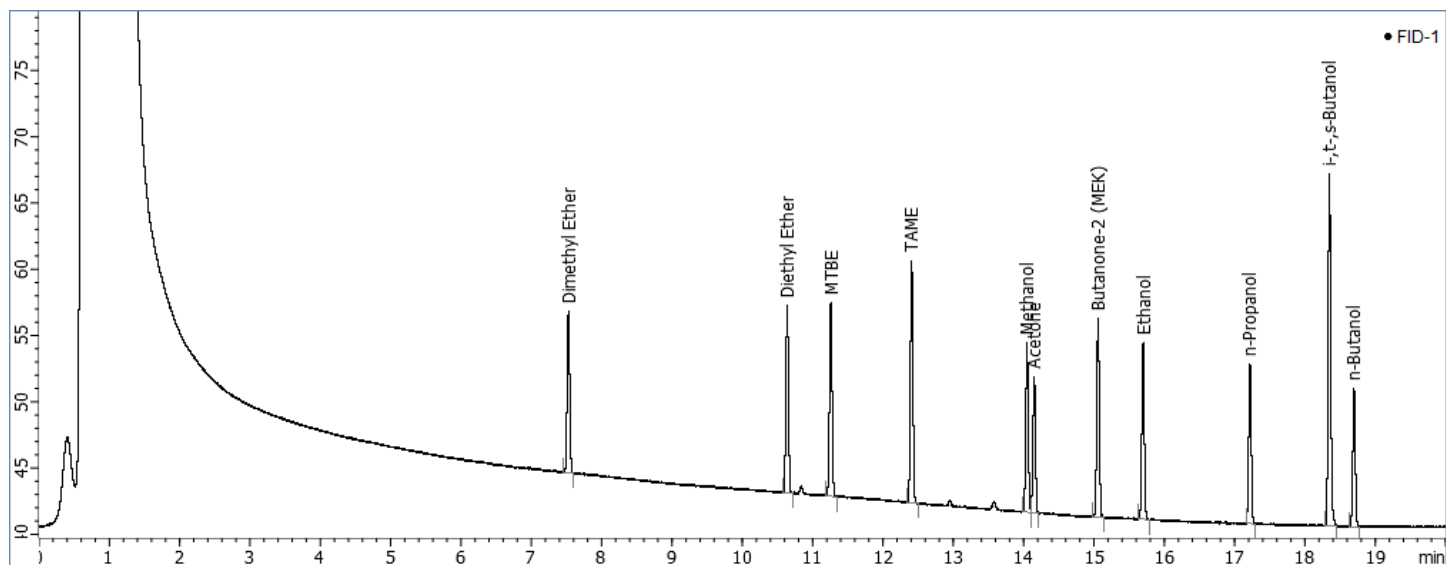
Run Time:

25 min

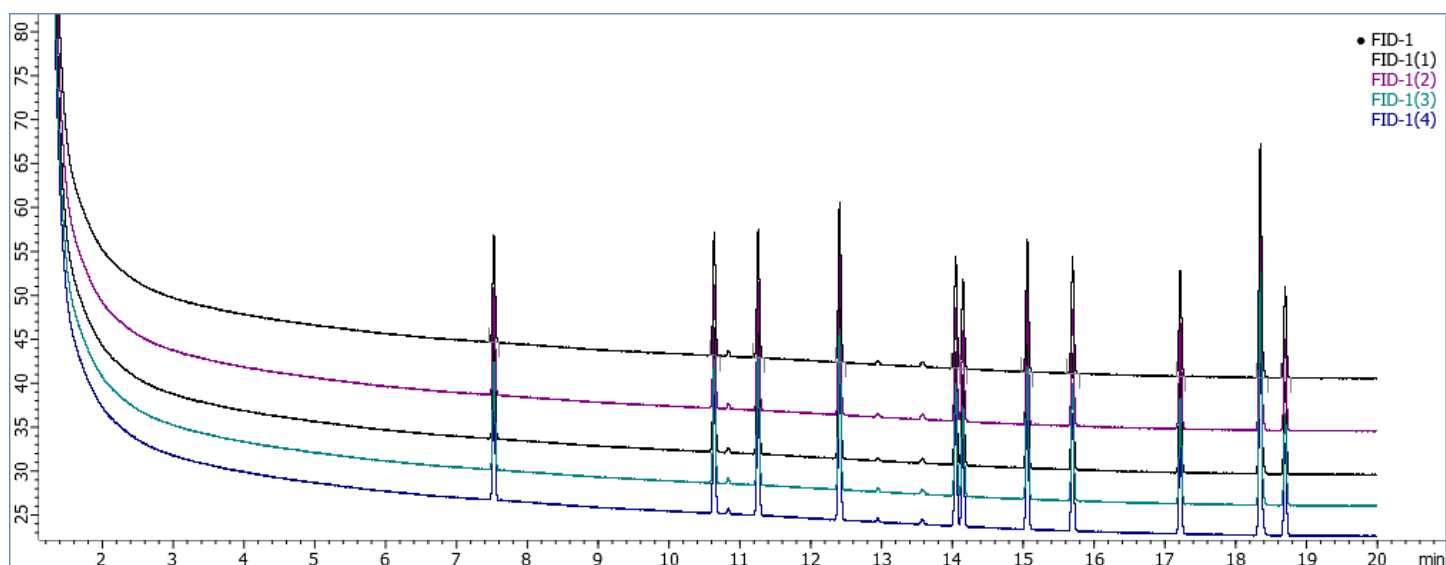
Features & Benefits:

- Chromatec-Crystal 9000 GC Analyzer #1503 enables determination of low level individual oxygenates in hydrocarbon streams (ethylene, propylene, butylene and others).
- Micro-volume Deans switching system provides high efficiency separation of target components from hydrocarbon matrices.
- Preprun function for the oven allows holding temperature of PLOT column at optimal level between runs and assures stable retention times for the components from run to run.
- All types of samples (gaseous, liquefied and liquid) can be injected thanks to different sampling devices installed into GC successively.

Chromatograms:



Oxygenates test mix, appr. 4-5 ppm in hexane



Excellent retention times reproducibility in series



The data provided herein can be changed without prior notice.
© CJSC Chromatec. All rights reserved
Yoshkar-Ola, Russian Federation
Date of current version: 1.02.2016
Date of first version: 1.02.2016
09-112-6009EN

For more information please contact us at:
info@chromatec-instruments.com